



PROPRIETARY NOTE:
 NOTICE TO ALL PERSONS RECEIVING THIS DRAWING.
 THIS DOCUMENT IS THE PROPERTY OF TSSUSA.
 AND IS NOT TO BE DISCLOSED, REPRODUCED IN WHOLE
 OR IN PART OR USED FOR MANUFACTURING PURPOSES
 BY ANYONE WITHOUT THE CONSENT OF PREMIER FILTERS.

LV1A-H-2L-032A-480V-C

2-LINE + GROUND COMPOSITE HEMP FILTER

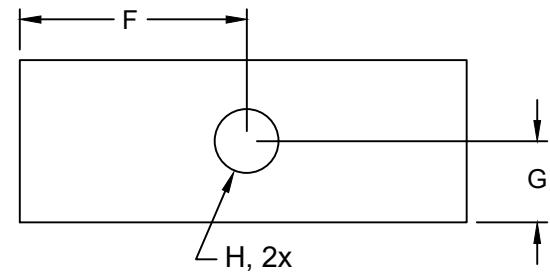
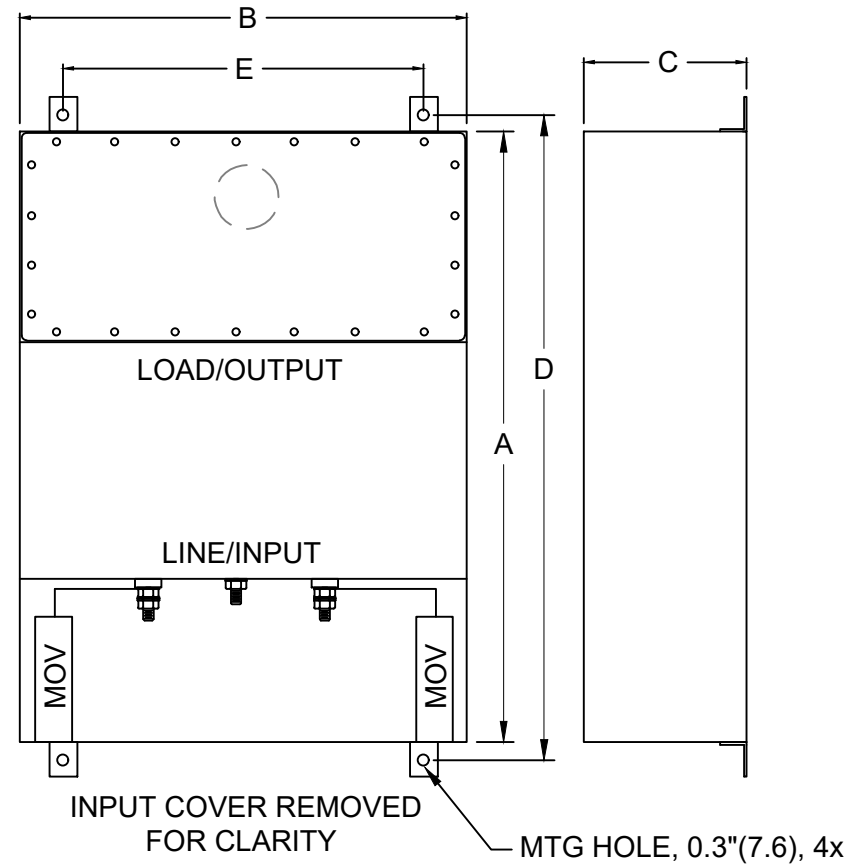
SPECIFICATIONS

- MAX VOLTAGE: 0-277/0-480VAC
- RATED CURRENT: 32A/LINE
- OPERATING TEMP.: -40 TO 65C
- HI POT (L-G): 2200VDC
- DISCHARGE VOLT. (@277V): <30V IN 30S
- VOLT. DROP: <2% MAX AT FULL RATED UNITY LOAD
- PERFORMANCE: Mil-STD-188-125-1A

MANUFACTURED FOR WALL MOUNTING
 FOR INDOOR CONTROLLED ENVIRONMENTS.
 ALL EMI SEAMS 100% WELDED AND OUTPUT
 ACCESS SEALED WITH EMI GASKET.



MODEL	AMPS	TERMINAL	DIMENSIONS (MM)								WEIGHT LBS(KG)
			A	B	C	D	E	F	G	H	
LV1A-H-2L-032A-480V-C	32	M6	508	203	127	546	153	101.5	63.5	35	32 (14.5)



FOR DIFFERENT CUTOUT SIZES OR LOCATIONS
 CONSULT FACTORY